

Limit switches

Osiswitch® Classic

Plastic, double insulated, type XCK S

Conforming to CENELEC EN 50041

Complete units with 1 ISO M20 x 1.5 cable entry

Type of head	Plunger (fixing by the body)		Rotary (fixing by the body)				
	Form B (1)	Form C (1)	Form A (1)			Form D (1)	
Type of operator	Metal end plunger	Steel roller plunger	Thermoplastic roller lever (4)	Elastomer roller lever, Ø 50 mm (4)	Variable length thermoplastic roller lever (4)	Variable length elastomer roller lever, Ø 50 mm (4)	Round thermoplastic rod lever, Ø 6 mm (5) (6)
References (2) (3)							
 2-pole N/C + N/O snap action (XE2S P2151)	XCK S101H29	XCK S102H29	XCK S131H29	XCK S139H29	XCK S141H29	XCK S149H29	XCK S159H29
 2-pole N/C + N/O break before make, slow break (XE2N P2151)	XCK S501H29	XCK S502H29	XCK S531H29	XCK S539H29	XCK S541H29	XCK S549H29	XCK S559H29
 2-pole N/C + N/C snap action (XE2S P2141)	ZCK S9H29 + ZCK D01	ZCK S9H29 + ZCK D02	ZCK S9H29 + ZCK D31	ZCK S9H29 + ZCK D39	ZCK S9H29 + ZCK D41	ZCK S9H29 + ZCK D49	ZCK S9H29 + ZCK D59
 2-pole N/C + N/C simultaneous, slow break (XE2N P2141)	ZCK S7H29 + ZCK D01	ZCK S7H29 + ZCK D02	ZCK S7H29 + ZCK D31	ZCK S7H29 + ZCK D39	ZCK S7H29 + ZCK D41	ZCK S7H29 + ZCK D49	ZCK S7H29 + ZCK D59
 3-pole N/C + N/C + N/O snap action (XE3S P2141)	ZCK SD39H29 + ZCK D01	ZCK SD39H29 + ZCK D02	ZCK SD39H29 + ZCK D31	ZCK SD39H29 + ZCK D39	ZCK SD39H29 + ZCK D41	ZCK SD39H29 + ZCK D49	ZCK SD39H29 + ZCK D59
 3-pole N/C + N/C + N/O break before make, slow break (XE3N P2141)	ZCK SD37H29 + ZCK D01	ZCK SD37H29 + ZCK D02	ZCK SD37H29 + ZCK D31	ZCK SD37H29 + ZCK D39	ZCK SD37H29 + ZCK D41	ZCK SD37H29 + ZCK D49	ZCK SD37H29 + ZCK D59
Weight (kg)	0.095	0.105	0.145	0.150	0.155	0.155	0.150
Contact operation	 ■ contact closed □ contact open		(A) = cam displacement (P) = positive opening point		⊕ N/C contact with positive opening operation		

Characteristics

Switch actuation	On end	By 30° cam	By any moving part			
Type of actuation						
Maximum actuation speed	0.5 m/s		1.5 m/s			1 m/s
Mechanical durability in millions of operating cycles	25	15	20			
Minimum force or torque	For tripping	15 N	12 N	0.15 N.m		
	For positive opening	45 N	36 N	0.3 N.m	–	–
Cable entry (3)	1 entry tapped M20 x 1.5 mm for ISO cable gland, clamping capacity 7 to 13 mm					

(1) Form conforming to EN 50041, see page 31900/9.

(2) Switches with gold contacts or ring type connections: please consult your Regional Sales Office.

(3) For an entry tapped for a n° 13 cable gland, delete H29 from the end of the reference. Example: XCK S101H29 becomes XCK S101.

(4) Adjustable throughout 360° in 5° steps, or in 90° steps by reversing the notched washer.

(5) Adjustable throughout 360° in 5° steps, or in 45° steps by reversing the lever mounting.

(6) Value taken with actuator operating at 100 mm from the fixing.

Limit switches

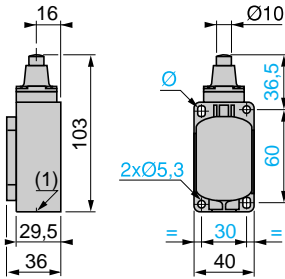
Osiswitch® Classic

Plastic, double insulated, type XCK S

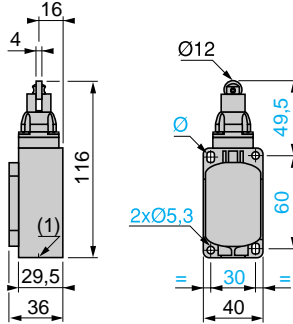
Conforming to CENELEC EN 50041

Complete units with 1 ISO M20 x 1.5 cable entry

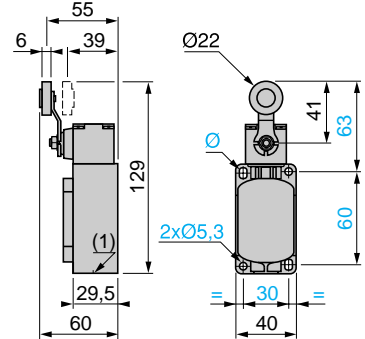
XCK S01H29
ZCK S0 + ZCK D01



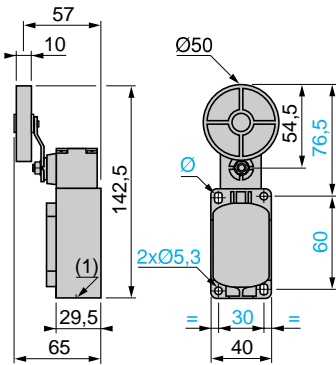
XCK S02H29
ZCK S0 + ZCK D02



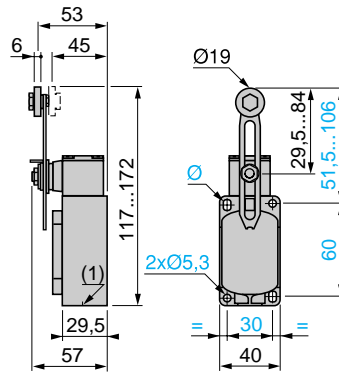
XCK S031H29
ZCK S0 + ZCK D31



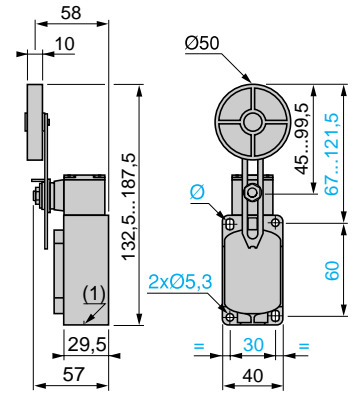
XCK S039H29
ZCK S0 + ZCK D39



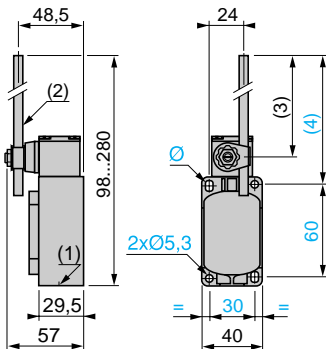
XCK S041H29
ZCK S0 + ZCK D41



XCK S049H29
ZCK S0 + ZCK D49



XCK S059H29
ZCK S0 + ZCK D59



(1) Tapped entry for ISO M20 x 1.5 or Pg 13 cable gland.

(2) Ø 6 rod, length 200 mm.

(3) 190 max.

(4) 212 max.

Ø: 2 elongated holes Ø 5.3 x 7.3.