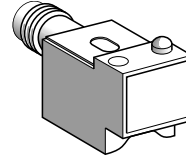
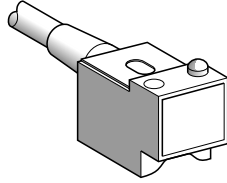


Magnet sensors

Osiprox® Application
Sensors for establishing position of piston
in pneumatic cylinders
Block type. Plastic case

Units

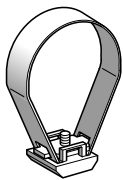
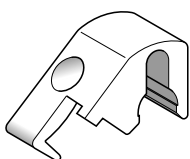


Operating range	≥ 11 mT	≥ 11 mT
References		
3-wire ---	PNP NO	XS7 V12PA332
	NPN NO	XS7-V12NA332
Weight (kg)	0.010	0.015

Characteristics

Connection	Pre-cabled, 3 x 0.2 mm²	Connector
Degree of protection Conforming to IEC 60529	IP 67	IP 67 with screw threaded connector IP 65 with clip together connector
Operating zone	0...3.5 mm from the sensing face	
Repeat accuracy	± 0.1 mm	
Differential travel	See table on following page	
Ambient air temperature	Operation : - 10...+ 60 °C. Storage - 40...+ 70 °C	
Output state indication	LED (yellow)	
Rated supply voltage	--- 12...24 V	
Voltage limits (including ripple)	--- 10...30 V	
Switching capacity (1)	0...100 mA	
Voltage drop, closed state	≤ 0.5 V	
Residual current, open state	-	
Current consumption, no-load	≤ 30 mA	
Actuation speed	≤ 10 m/s	

References of fixing accessories

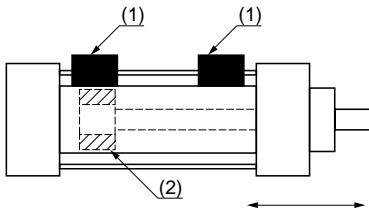
	Description	Sold in lots of	For cylinder Ø mm	Unit reference	Weight kg
 XSZ B210	Fixing collars, strap type	5	10	XSZ B210	0.005
			12	XSZ B212	0.005
			18	XSZ B216	0.008
			20	XSZ B220	0.008
			25	XSZ B225	0.010
 XSZ B240	Fixing brackets	1	32 and 40	XSZ B240	0.030
			50 and 63	XSZ B263	0.030
			80 and 100	XSZ B200	0.030

(1) These sensors do not incorporate overload or short-circuit protection and therefore, it is essential that a "quick-blow" fuse of 0.4 A be connected in series with the load. See page 37317/2.

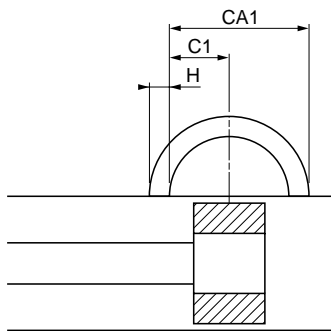
Magnet sensors

Osiprox® Application
Sensors for establishing position of piston
in pneumatic cylinders
Block type. Plastic case

Description



(1) Sensors
(2) Magnets

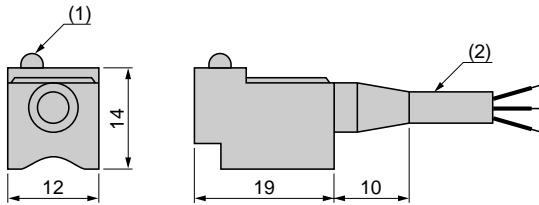


XS7 V sensors incorporate a special circuit comprising a semi-conductor that is reactive to the magnetic field of a given induction magnet. The magnets are generally fixed to the piston and, as it travels the non-ferrous cylinder sleeve, influence the sensor attached to the cylinder housing. Various types of collar are available for fixing the sensor.

Ø cylinder	CA1 active zone	C1 travel	H hysteresis
10 mm	7.2 mm	3.25 mm	0.7 mm
12 mm	7.8 mm	3.45 mm	0.7 mm
16 mm	8.5 mm	3.8 mm	0.9 mm
20 mm	9.3 mm	4.2 mm	0.9 mm
25 mm	10.2 mm	4.6 mm	1 mm
32 mm	11 mm	5 mm	1 mm
40 mm	12 mm	5.5 mm	1 mm
50 mm	12 mm	5.5 mm	1 mm
63 mm	14 mm	6.5 mm	1 mm
80 mm	16 mm	7.5 mm	1 mm
100 mm	18 mm	8.5 mm	1 mm

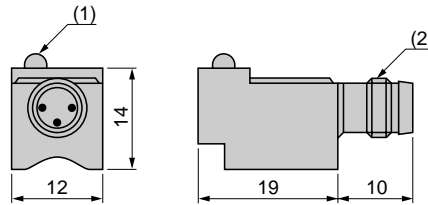
Dimensions

XS7 V12●A332



(1) LED
(2) 3-core cable

XS7 V12●A332S



(1) LED
(2) M8 threaded connector

Wiring schemes

M8 pre-connector



Depending on connector page 30210/3.

Pre-cabled

BN : Brown
BU : Blue
BK : Black

3-wire NO output

